



4-Star Trailers, Inc. SLANT LOAD  
 Base Model: 4S5D318LQ HORSE TRAILER

Customer: COAST TO COAST / SUDDEN IMPULSE

Serial No: 40678  
 Model: HTXG5D388080

WIDTH: 8'0"

LENGTH: 38'0"

HEIGHT: 8'0"

GWWR:

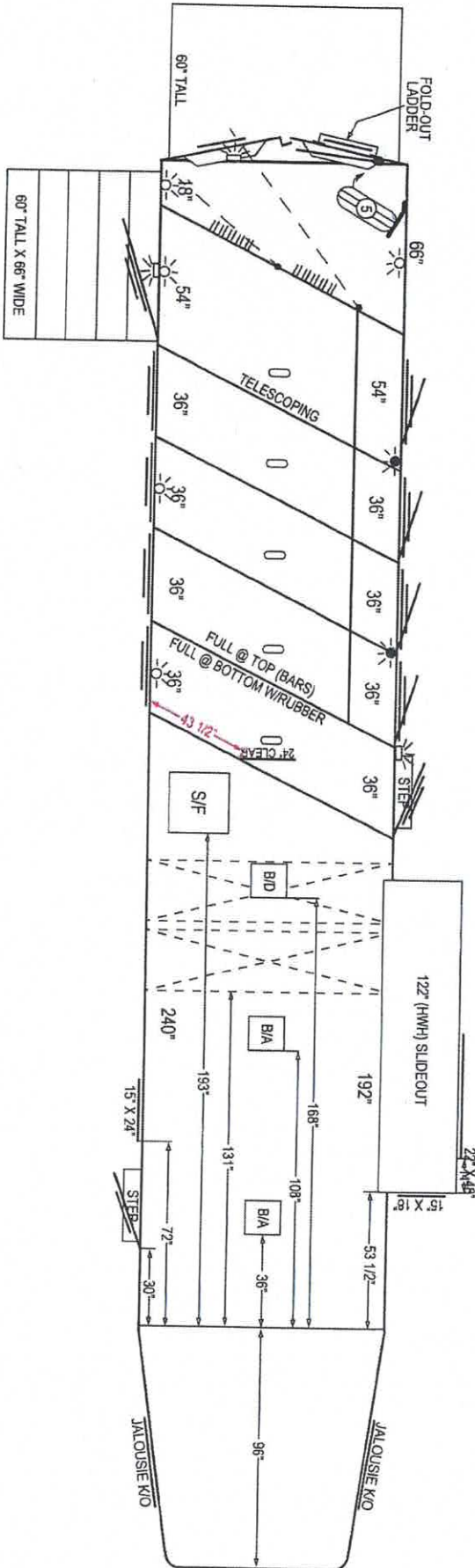
Jig: 3

Date: 12/6/21

RRG  
 JCS

3/4/22

\*HOT\*



ALL MEASUREMENTS ARE APPROXIMATE

\*\*\*NOTE: LIVING QUARTERS (INTERIORS)  
 ARE FIGURED @ 400 LBS/FT (SHORTWALL)  
 FOR CALCULATING AXLE AND TIRE REQUIREMENTS\*\*\*



4-Star Trailers, Inc.

Base Model: 4S5D318LQ

SLANT LOAD HORSE TRAILER

Serial No:

40678

Model:

HTXG5D388080

Customer:

COAST TO COAST / SUDDEN IMPULSE

Jig: 3

Date: 12/6/21

RKC  
JCS

3/4/22

**\*HOT\***

# SEE DRAWING

ALL MEASUREMENTS ARE APPROXIMATE

Width: 8'0" Length: 38'0" Height: 8'0"

|    |  |   |  |
|----|--|---|--|
| 1  | Coupler Assy: 2 5/16" ADJUSTABLE *LARGE GN & COUPLER ASSY* - SHORTEN COUPLER TO 18"                    |   |  |
| 2  | Drop Leg: DUAL LEG HYDRAULIC (HWH) W/BATTERY BOX & BATTERY WIRED UP                                    |   |  |
| 3  | Subframe Assy: SEE LINE 33, 34 & 35  | Overhang:   |  |
| 4  | Axles: 2-102" Capacity: 9,000 # Type: TORSION Brakes: HYD / DRUM Hub: 8-BOLT Mtg. Brkt: 69 3/4"        |   |  |
| 5  | Tires: 245 / 70R17.5, 18 - PLY   | Spare: YES  |  |
| 6  | Wheels: 17.5 X 6.75 ALUMINUM (ALCOA)   |   |  |
| 7  | GN Floor Assy: .090 SMOOTH *96" GOOSENECK W/REINFORCEMENT*   |   |  |
| 8  | Floor Assy: SMOOTH RIBBED ALUMINUM   |   |  |
| 9  | GN Side Assy: PP WHITE TAPER NOSE 12" EACH SIDE W/JALOUSIE K/O WINDOW CS & SS - SEE LINE 36            |   |  |
| 10 | Drop Ht: 46 7/8"   |   |  |
| 11 | Side Assy: CS: PP WHITE @ TOP W/(4) DROP DOWNS W/WINDOWS - SEE LINE 37                                 |   |  |
| 12 | SS: PP WHITE @ TOP W/PP WHITE FEED DOORS - SEE LINE 41   |   |  |
| 13 | Nose: PP WHITE W/POLISHED CORNER CAPS  |   |  |
| 14 | Roof: INSULATE & LINE HORSE COMPARTMENT & REAR TACK  | Top Rail Lgth=  |  |
| 15 | Rear Doors: PP WHITE DOUBLE 50/50 REAR DOORS W/WINDOWS - SEE LINE 44 & 45                              |   |  |
| 16 | D/R Door: PP WHITE *29" CLEAR OPENING* W/WINDOW @ CS - SEE LINE 46 & 47                                |   |  |
| 17 | W/T Door: PP WHITE W/DROP DOWN W/WINDOW & DROP DOWN WINDOW BARS SS @ BULKHD - SEE LINE 47              |   |  |
| 18 | Feed Doors: FOUR (4) PP WHITE DROP DOWNS W/WINDOW & DROP DOWN WINDOW BARS                              |   |  |
| 19 | Dividers: FOUR (4) 1/2 HORSE DIVIDERS W/PADS - SEE LINE 48 & 49  |   |  |
| 20 | Domelights: SEVEN (7)  |   |  |
| 21 | Lights & Wiring: STD, PAIR OF EXTRA HEIGHT TURN SIGNALS, (3) L.E.D. LOAD LIGHTS: (1) @ CS SIDE         |   |  |
| 22 | RAMP, (1) SS @ W/T DOOR & (1) @ REAR   |   |  |
| 23 | D.O.T. Tape: YES Custom Graphics: YES  |   |  |
| 24 | X Bulkhead Wall: PERM. SLANT - SEE LINE 50   | NO Floor Mats: NONE - SEE LINE 53                     |  |
| 25 | X Rear Tack Wall: SEE LINE 51  | X Rubber Bulkhead Wall:                               |  |
| 26 | X Feed Bags: ONE (1) @ 1ST STALL   | X Rubber CS & SS Walls:                               |  |
| 27 | X Inside Ties, 2 Per: TEN (10)   | X Rubber Wheel Wells: SEE LINE 54                     |  |
| 28 | X Outside Ties: TEN (10): (5) CS & (5) SS  | NO Carpet: NONE - SEE LINE 55                         |  |
| 29 | X Breast Bar:  | X Saddle Racks, 1 Per: FIVE (5) - SEE LINE 56         |  |
| 30 | X Butt Bar: PADDED CHAIN CS @ 5TH STALL  | X Bridle Hooks (20): SEE LINE 57                      |  |
| 31 | X Two-Way Roof Vents, 1 Per: FIVE (5) CENTERED   | X Brush Tray (2): (1) @ CS RT DOOR & (1) @ SS RT DOOR |  |
| 32 | OPTIONS:   | X Blanket Bar (5): SWINGOUT @ SS REAR TACK DOOR       |  |
| 33 | *SPREAD AXLES*   |   |  |
| 34 | *USE CAR HAULER SUB-FRAME*   |   |  |
| 35 | *NARROW INSIDE FENDER WIDTH & LOWER OUTSIDE FENDERS 4"   |   |  |
| 36 | CS & SS JALOUSIE KICKOUT WINDOW TO START 11" OFF GN FLOOR  |   |  |
| 37 | PP WHITE SIDE LOAD DOOR (1" THRESHOLD) W/DROP DOWN W/WINDOW CS @ 5TH STALL - SEE LINE 38               |   |  |
| 38 | PP WHITE 60" TALL X 66" WIDE EASY LIFT RAMP W/(4) TRACTION BARS SPACED EVENLY BEHIND CS SIDE LOAD DOOR |   |  |
| 39 | SEE PAGE 2   |   |  |

VIN:

BY:

DATE:

CHKD:



4-Star Trailers, Inc.

SLANT LOAD HORSE TRAILER

Serial No: 40678

Model: HTXG5D388080

40 OPTIONS CONTINUED:

- 41 122" (HWH) SLIDEOUT @ SS TO START 53 1/2" B.O.D. - SEE LINE 42 & 43
- 42 (1) 22" X 48" JALOUSIE WINDOW @ SS TO START 14" BACK OF FRONT SLIDEOUT WALL & 34" OFF SLIDEOUT FLOOR
- 43 (1) 15" TALL X 18" WIDE PICTURE WINDOW @ SS ON FRONT SLIDEOUT WALL TO START 40" OFF SLIDEOUT FLOOR
- 44 REAR DOORS: SS OVER CS - CS DOOR W/BUTTERFLY LATCH & SS DOOR W/DOUBLE SPRING LOADED LATCHES W/HANDLE
- 45 PP WHITE 60" TALL X FULL WIDTH EASY LIFT RAMP BEHIND DOUBLE REAR DOORS
- 46 D/R DOOR: ROUGH OPENING TO START 30"B.O.D.
- 47 (2) FOLD DOWN STEPS: (1) CS @ D/R DOOR & (1) SS @ W/T DOOR
- 48 1ST DIVIDER FULL @ TOP (BARS) & FULL @ BOTTOM W/RUBBER BOTH SIDES, 2ND, 3RD & 4TH DIVIDER W/SPREAD AIR FLOW (BARS), \*ALL
- 49 HEAD SHIELDS IN MANGER W/SPREAD AIR FLOW (BARS)\*, TELESCOPE 4TH DIVIDER
- 50 BULKHEAD WALL W/DOOR (24" CLEAR), DOOR TO START 43 1/2" OFF CS WALL
- 51 SEALED BI-FOLD REAR TACK WALL W/2" THRESHOLD TO START 390" B.O.D. \*SEE E. COLBERT FOR HOLBACK SETTINGS\*
- 52 (4) 18" LOWERED TROUGH STYLE FEED MANGERS W/PP WHITE OUTSIDE ACCESS DOORS @ 2ND THRU 5TH STALLS
- 53 W.E.R.M. SEALED RUBBER FLOORING (BLACK) IN HORSE COMPARTMENT & REAR TACK
- 54 TAPER WHEEL WELLS UP TO SIDE & TAPER ENDS @ CS ONLY
- 55 LINE & CARPET ALL WALLS IN REAR TACK, CARPET BOTH REAR DOORS & ALL TACK (GRAY)
- 56 (5) SWINGOUT SADDLE RACKS W/SINGLE GAS SHOCK @ SS IN REAR TACK
- 57 (20) BRIDLE HOOKS @ SWINGING REAR TACK WALL: (5) HIGH @ EACH SIDE OF HINGES & (5) 48" OFF FLOOR EACH SIDE OF HINGES
- 58 15" X 24" JALOUSIE WINDOW @ CS TO START 72" B.O.D. & 42" OFF FLOOR
- 59 PROPANE BOTTLE BRACKETS ON 14" CENTERS @ DROP, LOWERED TOWARD SS JACK
- 60 (2) 24" HOLDING TANKS TO START 131" B.O.D.
- 61 TWO (2) BRACES ONLY FOR ROOF AIR: (1) TO START 36" B.O.D. & (1) TO START 108" B.O.D.
- 62 (1) BRACE ONLY FOR LUNA DOME TO START 168" B.O.D.
- 63 SPECIAL ROOF FRAMING: 24" X 24" TO START 193" B.O.D. & 8" OFF CS WALL
- 64 SPECIAL FRAMING (CS): 17" TALL X 17" WIDE TO START 72" B.O.D. & 6" OFF FLOOR
- 65 SPECIAL FRAMING (CS): 8 1/4" TALL X 18 1/4" WIDE TO START 98" B.O.D. & 6" OFF FLOOR
- 66 SPECIAL FRAMING (CS): 14" TALL X 22" WIDE TO START 123" B.O.D. & 6" OFF FLOOR
- 67 SPECIAL FRAMING (CS): 14" TALL X 22" WIDE TO START 123" B.O.D. & 52" OFF FLOOR
- 68 10 FT. PP WHITE COMBO-POD W/GENERATOR BOX (5.5 ONAN) ON PLATFORM TOWARD CS W/FOLD OUT LADDER @ SS REAR DOOR
- 69
- 70 \*NOTE: LIVING QUARTERS (INTERIORS) ARE FIGURED @ 400 LBS/FT (SHORTWALL) FOR CALCULATING AXLE & TIRE REQUIREMENTS\*
- 71
- 72
- 73
- 74
- 75
- 76
- 77
- 78
- 79
- 80
- 81
- 82
- 83
- 84
- 85
- 86
- 87
- 88
- 89



**4-Star Trailers, Inc.**  
 10000 NW 10th St  
 Oklahoma City, OK 73127-7125  
 (405) 324-7827 (800) 848-3095

**Sales Order**

**0006415**

**Job Number 40678**

**Time Modified 12/9/2021 2:06:05PM**

**Time Created 11/1/2021 1:23:57PM**

**Dealer Number 0000039**  
 COAST TO COAST TRAILER SALES  
 4250 W. HWY. 40  
 OCALA, FL 34482  
 (352) 402-9108

**Customized For: Sudden Impulse**

**Trailer Detail**

**Category Living Quarters**  
**Base Model 4S5D318LQ**  
**Trailer Quantity 1**  
**Description 31' x 8' x 7'6" Tall 5 Horse Side Load LQ GN - Two 8000# Torsion 102", Elect Brakes, 8-Bolt Hub, 235/85 R16, 1- Ply, 16" Alum Wheels, 2 5/16" Shorten 18" Adjustable Coupler, Block Axles 3" & Adjust Fenders, Single Leg/Single Speed Jack, , 96" Gooseneck w/ Reinforcement, Smooth Ribbed Alum Floor, PP White Taper 12" Each Side, (1) Window CS & (1) Jalousie Kickout Window SS, 46 7/8" Drop Height, CS PP White @ Top w/Windows, SS PP White @ Top w/PP White Feed Doors, 7 Slats Tall, Nose-PP White w/ Polished Corner Caps, One (1) PP White 26 1/2" Clear D/R Door w/Window @ CS, Walk-Thru Door One (1) PP White SS @ Bulkhead Wall w/PP White Drop Down w/Window & Bars, Four (4) Feed Doors PP White Drop Down w/Windows w/ Drop Down Bars, Four (4) 1/2 Horse Divider w/ Pads & Telescope Last Divider, Five (5) Dome Lights, Std Pair Extra Height Turn Signals, (1) L.E.D. Load Light @ Rear, D.O.T. Tape, Custom Graphics, Perm Slant Bulk Head Wall, Rear Tack Permanent Slant Sealed To Roof, Side Load Door @ CS 5th Stall, Easy Lift Ramp w/4 Traction Bars @ CS Door, Feed Bag @ 1st Horse, Inside Ties Ten (10), Outside Ties Ten (10), Two-Way Roof Vents (5), Rubber Side Walls & Both Rear Doors, 50/50 Rear Doors CS Over SS w/ Butterfly Latch & Double Spring Latch, Rubber Mats H/C & RT, Saddle Racks (5) Perm @ SS RT Corner, 10 Bridle Hooks, Brush Trays (2), Blanket Bar (1) Rear Tack Wall, Propane Bottle Brackets 14" Centers @ SS - Lowered, (2) 24" Holding Tank Brace, Roof Air Brace**

| Option # | Qty    | Category | Description  | Unit | Unit Price | Extended  |
|----------|--------|----------|--|------|------------|-----------|
| 2100     | 12.00- | FOOTAGE  | Add per 1" to horse comp length, including double wall & rubber and floor mats | EACH | 105.66     | 1,267.92- |
| 2104     | 96.00  | FOOTAGE  | Add per 1" to horse trailer dressing room length                               | EACH | 90.03      | 8,642.88  |
| 2400     | 38.00  | HEIGHT   | Add 6" to Height of Trailer  | EACH | 60.01      | 2,280.38  |
| 2480     | 1.00   | JACK     | Hydraulic Dual Landing Leg Jack - Include Battery & Box Wired Up               | EACH | 4,627.31   | 4,627.31  |

Continued



**4-Star Trailers, Inc.**  
 10000 NW 10th St  
 Oklahoma City, OK 73127-7125  
 (405) 324-7827 (800) 848-3095

**Sales Order**  
**0006415**

**Job Number 40678**

**Time Modified 12/9/2021 2:06:05PM**

**Time Created 11/1/2021 1:23:57PM**

**Dealer Number 0000039**  
**COAST TO COAST TRAILER SALES**  
 4250 W. HWY. 40  
 OCALA, FL 34482  
 (352) 402-9108

**Customized For: Sudden Impulse**

|      |        |             |   |      |           |           |
|------|--------|-------------|---|------|-----------|-----------|
| 1255 | 1.00   | AXLE        | Torsion 2-9000 lb w/ 5 245/70R17.5 18 ply tires ILO 2-8000 W/G614                         | EACH | 5,583.54  | 5,583.54  |
| 1298 | 1.00   | AXLE        | SPREAD AXLE   | EACH | 1,034.52  | 1,034.52  |
| 1550 | 1.00   | BRAKES      | Electro-Hydraulic brakes for tandem axle trailers only - includes adapter for GM vehicles | EACH | 3,409.88  | 3,409.88  |
| 3412 | 1.00   | WHEEL       | (5)17.5" Alcoa Aluminum Wheel - ILO Steel   | EACH | 2,376.91  | 2,376.91  |
| 3506 | 1.00   | WINDOW      | 15 in. x 24 in. window - Jalousie   | EACH | 486.61    | 486.61    |
| 3516 | 1.00   | WINDOW      | 19" x 34" window - Kick out - Jalousie - ILO standard                                     | EACH | 405.73    | 405.73    |
| 2887 | 1.00   | REINFORC    | Large GN & Coupler assy (36' Box Length & Up or Over 26,000# GVWR                         | EACH | 1,639.85  | 1,639.85  |
| 2893 | 2.00   | REINFORC    | Brace Roof for A/C  | EACH | 349.63    | 699.26    |
| 2903 | 264.00 | ROOF        | Line and insulate roof  | EACH | 7.81      | 2,061.84  |
| 1809 | 1.00   | DOOR - DF   | Small bulkhead door from horse compartment to dressing room with no window                | EACH | 1,219.78  | 1,219.78  |
| 1850 | 5.00   | DOOR - DF   | Drop down door w/ window ILO standard window  | EACH | 692.72    | 3,463.60  |
| 1859 | 4.00   | DOOR - DF   | Access door   | EACH | 408.34    | 1,633.36  |
| 1710 | 1.00   | DIVIDER - S | Full divider-bottom only  | EACH | 408.34    | 408.34    |
| 1712 | 1.00   | DIVIDER - S | Full divider-top only   | EACH | 408.34    | 408.34    |
| 1724 | 4.00   | DIVIDER - S | Spread air flow in divider, ILO standard  | EACH | 120.02    | 480.08    |
| 2610 | 4.00   | MANGER      | 18" Deep Manger   | EACH | 695.34    | 2,781.36  |
| 3075 | 1.00   | SLIDE OUT   | Hydraulic 90" Slide-Out (36" deep x 84" wide x 68" tall) I.D. (Includes 22"x48" Jalousie) | EACH | 11,908.10 | 11,908.10 |
| 3077 | 38.00  | SLIDE OUT   | Use to make Slide-Out Larger then 90" (Single and/or Double Slide Outs)                   | EACH | 43.06     | 1,636.28  |
| 2554 | 2.00   | LIGHT       | L.E.D. Dome Light   | EACH | 54.78     | 109.56    |
| 2559 | 2.00   | LIGHT       | L.E.D. loading light  | EACH | 108.29    | 216.58    |

Continued



**4-Star Trailers, Inc.**  
 10000 NW 10th St  
 Oklahoma City, OK 73127-7125  
 (405) 324-7827 (800) 848-3095

**Sales Order**

**0006415**

**Job Number 40678**

**Time Modified 12/9/2021 2:06:05PM**

**Time Created 11/1/2021 1:23:57PM**

**Dealer Number 0000039**  
 COAST TO COAST TRAILER SALES  
 4250 W. HWY. 40  
 OCALA, FL 34482  
 (352) 402-9108

**Customized For: Sudden Impulse**

|         |         |           |   |      |          |          |
|---------|---------|-----------|---|------|----------|----------|
| 2800    | 1.00    | RAMP - RE | Spring Loaded Rear Ramp   | EACH | 1,690.72 | 1,690.72 |
| 2803    | 1.00    | RAMP - RE | Side or rear ramp over 52 in. tall  | EACH | 387.46   | 387.46   |
| 2821    | 1.00    | RAMP      | Easy Lift Ramp Upcharge   | EACH | 388.77   | 388.77   |
| 2362    | 1.00-   | HAYRACK   | Extra ladder with hayrack   | EACH | 408.34   | 408.34   |
| 2367    | 1.00    | HAYRACK   | 8' Combo Pod (Includes generator box & platform   | EACH | 7,579.51 | 7,579.51 |
| 2371    | 1.00    | HAYRACK   | Add 2' to Haypod  | EACH | 1,077.57 | 1,077.57 |
| 2381    | 1.00    | HAYRACK   | Fold Out Ladder   | EACH | 519.22   | 519.22   |
| 3440    | 0.50    | WHEEL WE  | Taper wheel well ends only  | EACH | 339.18   | 169.59   |
| 3446    | 1.00    | WHEEL WE  | Taper wheel wells up to sides, one side only  | EACH | 259.60   | 259.60   |
| 3100    | 4.00    | TACK      | Blanket bar   | EACH | 97.84    | 391.36   |
| 3102    | 1.25    | TACK      | Blanket bars swing out up to total of 4 - add to blanket bar cost                             | EACH | 113.50   | 141.88   |
| 3130    | 10.00   | TACK      | Bridle hooks  | EACH | 10.43    | 104.30   |
| 3260    | 1.00    | VENT      | Brace for lunar dome  | EACH | 189.17   | 189.17   |
| 2922    | 176.00  | RUBBER    | WERM Sealed Rubber Floor ILO Std. Mats  | EACH | 20.26    | 3,565.76 |
| 2934    | 1.00    | RUBBER    | Rubber (36" tall) both sides of removable or permanent full to floor divider                  | EACH | 350.84   | 350.84   |
| 1611    | 1.00    | CARPET    | Carpet Bulkhead Wall - Includes Lining  | EACH | 891.91   | 891.91   |
| 1612    | 8.00    | CARPET    | Carpet on all walls - Between Post  | EACH | 55.73    | 445.84   |
| 1613    | 7.00    | CARPET    | Carpet on All Walls - Includes Lining   | EACH | 110.61   | 774.27   |
| 2971    | 1.25    | SADDLE    | Saddle racks swing out up to total of 4 - add to saddle rack cost (Includes Single Gas Shock) | EACH | 380.99   | 476.24   |
| 3096    | 2.00    | STEP      | Fold down step  | EACH | 447.47   | 894.94   |
| SPECIAL | SPECIAL |           | Car Hauler Sub-Frame Upgrade  |      |          | 547.92   |
| SPECIAL | SPECIAL |           | Bi-Fold Wall w/Latches  |      |          | 2,179.52 |

|                   |                     |
|-------------------|---------------------|
| Base Price        | \$69,195.76         |
| Options Price     | \$78,864.22         |
| Total Gross Price | \$148,059.98        |
| Discount          | \$0.00              |
| <b>Total</b>      | <b>\$148,059.98</b> |

Disclaimer: ALL PRODUCTS AND PRICES ARE SUBJECT TO CHANGE WITHOUT NOTICE. CALL IF YOU HAVE QUESTIONS.



## 2021 Custom Quote Builder

VERSION 0.0

Date: November 2, 2021

Dealer: Coast to Coast

Customer: Inventory

Brand: 4-Star

VIN#: Quote

### 2021 Standard Features

#### Cabinets & Trim

- \* Solid Oak, maple or alder trim and cabinets throughout
- \* Solid wood window trim
- \* Crown molding throughout
- \* Chair rail in living area and bathroom
- \* Solid wood Raised Panel cabinet doors
- \* Laminate countertops with solid wood edges
- \* Hanging closets with countertop & mirror at the front of the gooseneck area
- \* Control panels behind cabinet door in overhead (Per floor plan)
- \* Overhead cabinet above sofa & kitchen base (Per floor plan)
- \* Medicine cabinet with mirror in bathroom (Per floor plan)
- \* Up to 6 drawers with ball bearing soft close drawer guides
- \* Mirrored solid wood bathroom door
- \* Hanging closet in the Gooseneck at drop wall
- \* Full height Cabinets in bathroom and Main LQ area (Per floor plan)

#### Appliances and Electronics

- \* Prep for air conditioner with non-powered fan
- \* Prep for microwave with flip-up door & 110 Volt Outlet
- \* Prep for 2 burner cook top with LP gas
- \* Prep for TV antenna with wire and backer plate in roof
- \* LCD TV Prep
- \* Upgraded 12volt non-lighted bath fan
- \* Prep for LP/Electric refrigerator with doors to enclose & clothes rod

#### Livability and Construction

- \* 3/4" Tongue & groove subfloor with 50 Year water resistant warranty
- \* Commercial grade vinyl flooring
- \* Carpeted Gooseneck floor
- \* R-6 Insulated floor throughout including gooseneck
- \* R-13 Insulation in ceiling with R-11 in walls
- \* Leather touch walls throughout
- \* Leather touch ceiling throughout
- \* Wood veneer lower panel walls to match cabinets
- \* Carpeted Step or Boot box cover
- \* Large double steps with storage into gooseneck (Per floor plan)
- \* 6" Memory Foam mattress (53" x 75" on 7' wide & 60" x 80" on 8' wide)
- \* Fire extinguisher
- \* Smoke, LP & CO2 Detectors
- \* Stainless steel exterior fasteners
- \* 2 Year full coverage warranty

#### Electrical Features

- \* Reading lights in gooseneck on switch
- \* Recessed LED ceiling lights throughout
- \* Light under sofa and kitchen overhead cabinet (If applicable)
- \* LED lighted grab handle & Logo
- \* LED Exterior 12 volt porch light
- \* Hook up light under gooseneck area
- \* Black receptacles and switches throughout
- \* 30amp Shore cord inlet and cord
- \* 120/12volt 55 Amp power converter
- \* Single group 27 deep cycle battery
- \* Coach monitoring system
- \* 12volt & 120volt receptacle at countertop in gooseneck area
- \* 120 Volt exterior GFCI protected receptacle
- \* 30 Amp Main breaker and fuse panel
- \* Heat Shrink terminals on all exterior electrical connections

#### Plumbing Features

- \* On demand pressure water system tested at 100 PSI
- \* Auto light 6 Gallon gas water heater
- \* Porcelain toilet (Bone Color)
- \* Sewer hose & holder under gooseneck
- \* Largest possible fresh water tank (Per plan)
- \* Largest possible waste tanks with 90 degree termination valves
- \* Shower pan with one piece surround (Parchment Color)
- \* Glass Shower door
- \* Upgraded brushed nickel or oil rubbed bronze faucets
- \* Stainless steel sink(s) sized per floor plan
- \* Outside water spigot located under gooseneck
- \* Dual 20# LPG Tanks with auto change regulator
- \* Black iron LP main line with copper gas lines to all appliances

#### Décor Features

- \* Brushed nickel or oil rubbed bronze hardware & lighting
- \* Stainless Steel or Black Appliances
- \* Full height mirror (Per Floor Plan)
- \* Solid Wood window valances
- \* Upholstered panels on entry and pass through door
- \* Roll up night shades on all windows with snap cover on entry door window

### Color Selections

Wood Species: \_\_\_\_\_

Exterior Hardware: \_\_\_\_\_

Gooseneck Ceiling: \_\_\_\_\_

Gooseneck Walls: \_\_\_\_\_

Slide Out Ceiling: \_\_\_\_\_

Kitchen backsplash \_\_\_\_\_

Valance Style: STANDARD - WOOD \_\_\_\_\_

Entry Door(s) Style: STANDARD \_\_\_\_\_

Seating Style: DELUXE \_\_\_\_\_

Sofa Pillow Style: 18" x 18" One Color \_\_\_\_\_

Wood Stain: \_\_\_\_\_

Flooring: \_\_\_\_\_

Main LQ Ceiling: \_\_\_\_\_

Main LQ Walls: \_\_\_\_\_

Slide Out Walls: \_\_\_\_\_

Bathroom backsplash \_\_\_\_\_

Valance Base Color: \_\_\_\_\_

Entry Door Base Color: \_\_\_\_\_

Seating Base Color: \_\_\_\_\_

Sofa Pillow Color: \_\_\_\_\_

Wood Finish Sheen: \_\_\_\_\_

Countertops: \_\_\_\_\_

Bathroom Ceiling: \_\_\_\_\_

Bathroom Walls: \_\_\_\_\_

Kitchen Walls: \_\_\_\_\_

Interior hardware Color: \_\_\_\_\_

Valance Accent Color: N/A \_\_\_\_\_

WINDOW SNAP COVER Color: \_\_\_\_\_

Seating Accent Color: \_\_\_\_\_

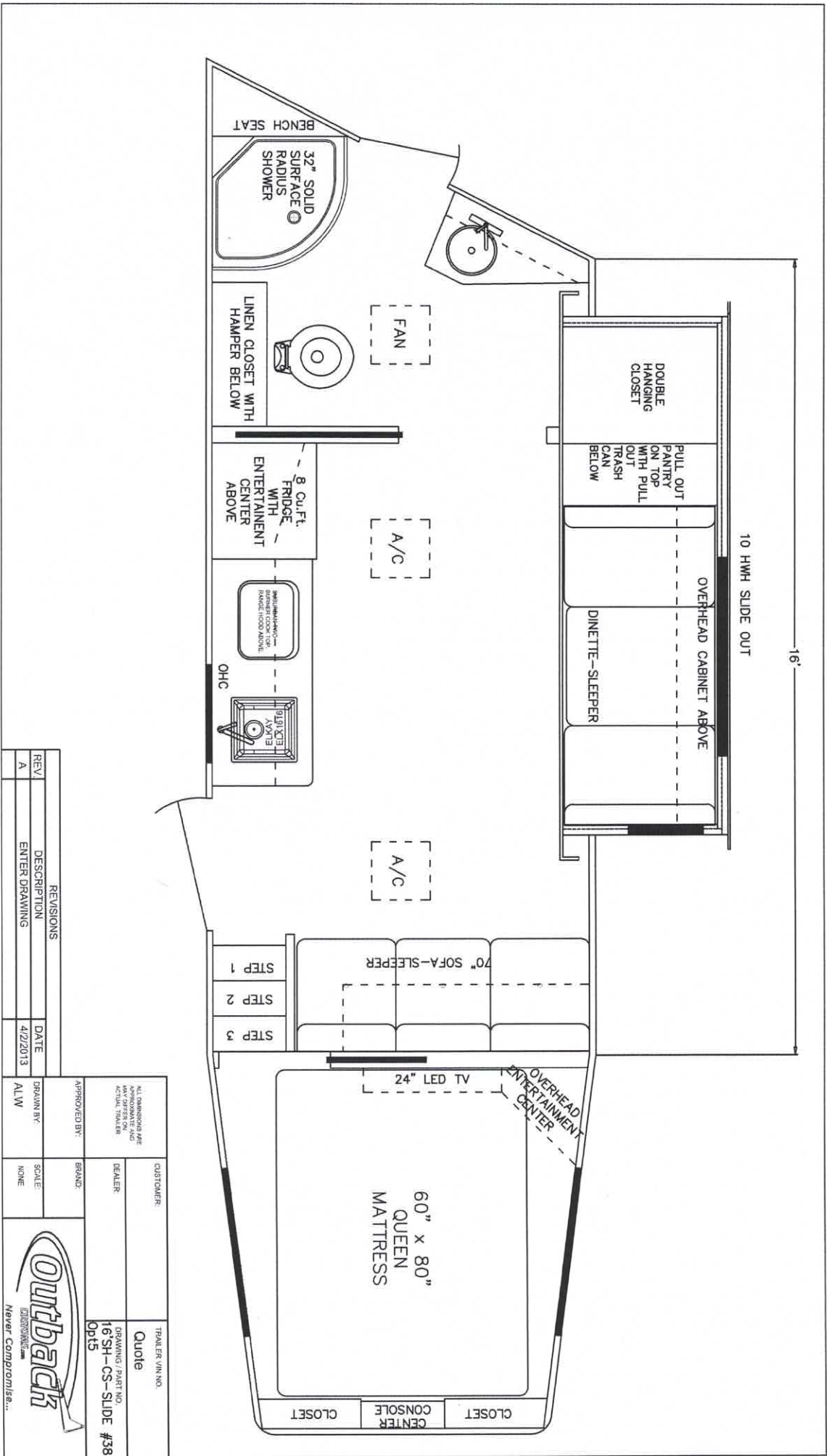
Appliance Color: \_\_\_\_\_

### Pricing and Available Options

| Quantity   | Base Package Pricing  | Total       | Total       |
|--|---|-------------|-------------|
| 1  | Base Package Price for up to 8' short wall  | \$25,993.00 | \$25,993.00 |
| 8  | Additional length per foot of short wall or straight wall over 8'   | \$2,626.00  | \$21,008.00 |
| <b>Slide out Options</b>                         |   |             |             |
| 10   | Finish trailer manufacturer built slide out (Includes standard decorative slide out fascia)(Price per foot of slide) - <b>HYDRAULIC</b> | \$539.00    | \$5,390.00  |
| 1  | Slide out awning with aluminum cover up to a 12' slide out  | \$1,146.00  | \$1,146.00  |
| 1  | Upgrade to bathroom slide out with pocket wall (Per floor plan)   | \$2,049.00  | \$2,049.00  |
| 1  | Slide out fascia trim upgrade #2 (Decorative leather touch accents with upgraded fascia including corbels)                              | \$2,509.00  | \$2,509.00  |
| <b>Exterior Options</b>                          |   |             |             |
| 1  | 9100 series electric awning up to 21' length (Lengths over 19' require center support)  | \$2,352.00  | \$2,352.00  |
| 1  | Aluminum weather shield cover upgrade to awning   | \$566.00    | \$566.00    |
| 1  | 30# Propane tank upgrade to standard dual 20# tanks   | \$236.00    | \$236.00    |
| 1  | LED full color awning light with remote control up to 21' length - Under LQ Awning  | \$863.00    | \$863.00    |
| <b>Generator, Electrical &amp; Solar options</b> |   |             |             |
| 1  | Upgrade to 50 amp electrical service (Includes shore cord with 50 amp to 20 amp adapter & upgrades power converter to 90 amp)           | \$825.00    | \$825.00    |







| REV | DESCRIPTION   | DATE     |
|-----|---------------|----------|
| A   | ENTER DRAWING | 4/2/2013 |

|              |          |
|--------------|----------|
| APPROVED BY: | ALW      |
| DATE:        | 4/2/2013 |

|                  |                    |
|------------------|--------------------|
| CUSTOMER:        | Quote              |
| DEALER:          | 16'SH-CS-SLIDE #38 |
| TRAILER VIN NO.: | Opt5               |



ALL DIMENSIONS ARE APPROXIMATE AND NOT TO SCALE. SEE TRAILER FOR ACTUAL DIMENSIONS.