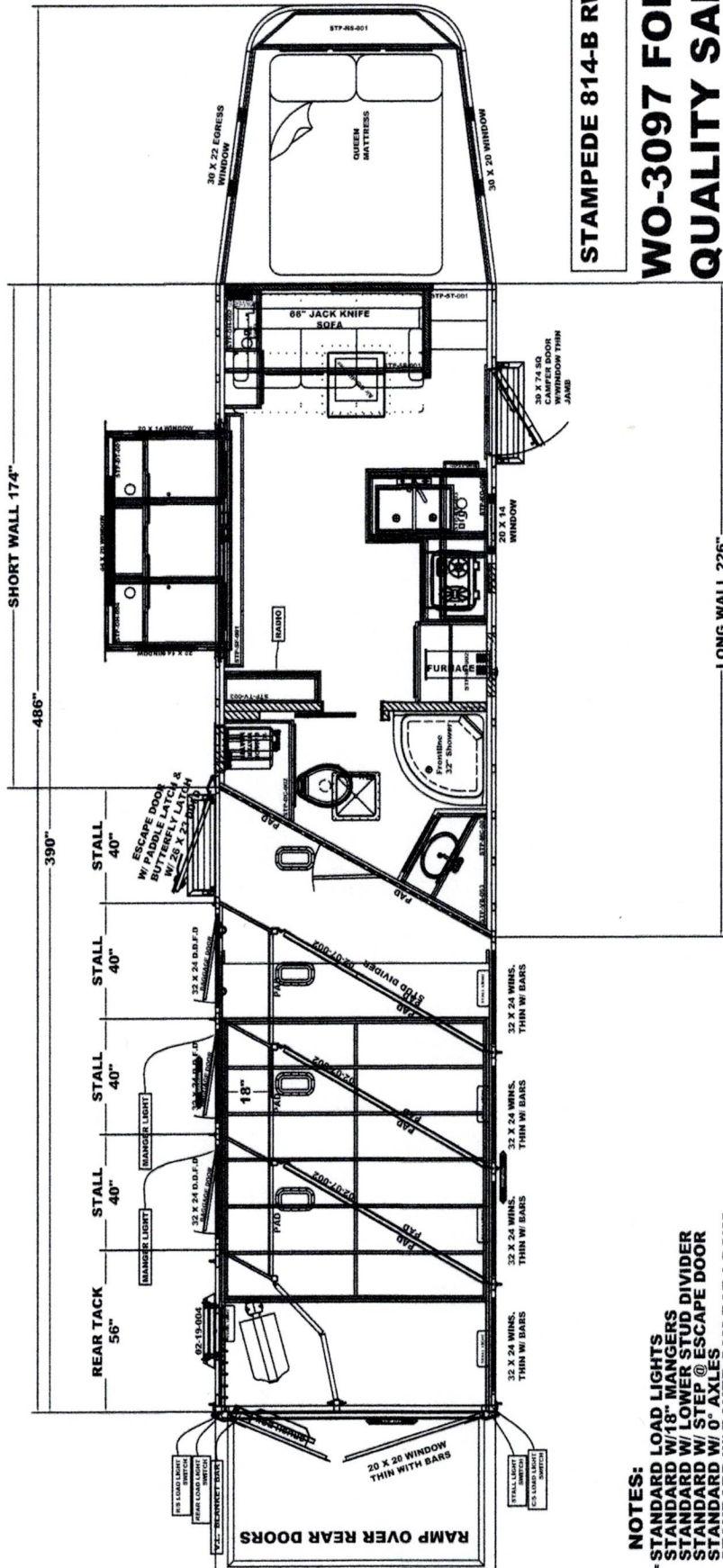


**DIMENSIONS AND LOCATIONS ARE APPROX.
SMALL CHANGES WILL BE MADE WHEN
CONVERTED TO THE HUCK STYLE TRAILER**



STAMPEDE 814-B RWS
WO-3097 FOR
QUALITY SALES

DATE	DATE
REVISED BY	APP/DATE
VIN#	XXX
DRAWING NAME	WO-3097 STAMPEDE 814-B RWS FOR QUALITY SALES.DWG

PROPRIETARY AND CONFIDENTIAL
THE INFORMATION CONTAINED IN THIS DRAWING IS THE SOLE PROPERTY OF MERHOW INDUSTRIES, INC. ANY REPRODUCTION IN PART OR AS A WHOLE WITHOUT THE WRITTEN PERMISSION OF MERHOW INDUSTRIES IS PROHIBITED.

DRAWING SCALE: DRAWING

1 2 3 4 5 6 7

- NOTES:**
- STANDARD LOAD LIGHTS
 - STANDARD W/18" MANGERS
 - STANDARD W/ LOWER STUD DIVIDER
 - STANDARD W/ STEP @ ESCAPE DOOR
 - STANDARD W/ 0° AXLES
 - STANDARD W/ BAUER CAM-BAR LOCKS
 - STANDARD W/ ALUMINUM BLANKET BARS
 - STANDARD W/ ALUMINUM BATTERY BOX
 - ADD A HAY-RACK
 - ADD A ROOFTOP WALK WAY
 - UPGRADE TO PULL OUT LADDER
 - ADD RAMP OVER REAR DOORS
 - ADD ROOFTOP GEN PREP
 - UPGRADE TO 10 GALLON WATER HEATER