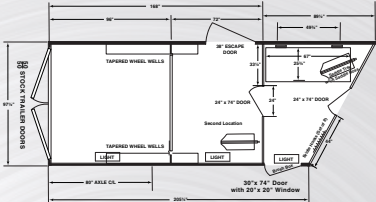
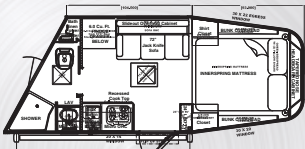




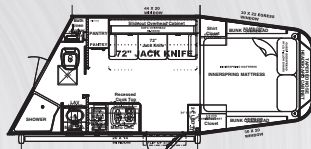
Merhow Next Generation 8' Wide Stock Combo's Living Quarters



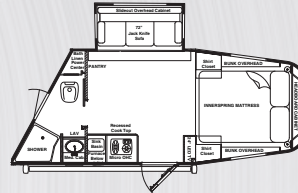
8w - Back End - Mid Tack Bunks 14' Std



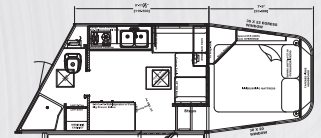
8009 RK NO SLIDE 6 CUBE



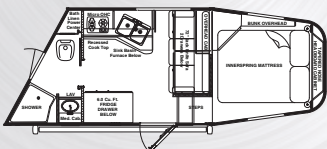
8009 RK NO SLIDE



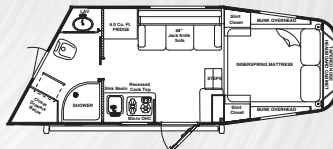
8009 RKS



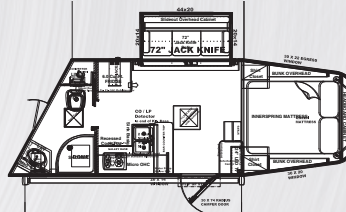
8009 RW DINETTE



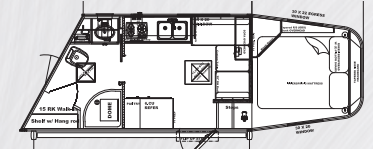
8009 RW SOFA



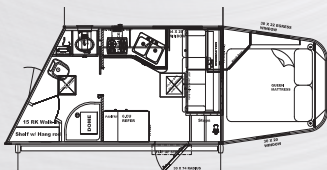
8010.5 RK-NS



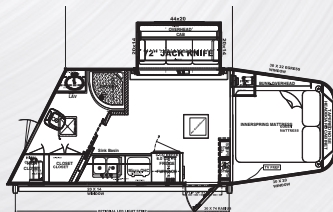
8011 RK-RS



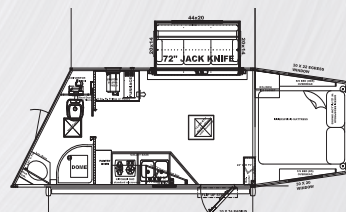
8011 RW DINETTE



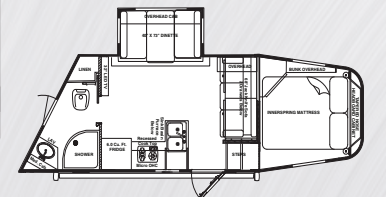
8011 RW SOFA



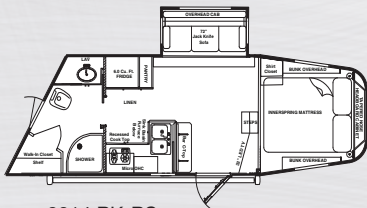
8012 BC



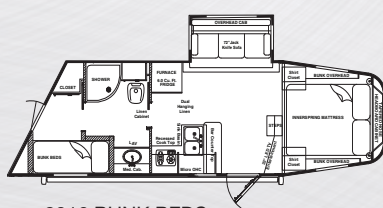
8013.5 RK-A



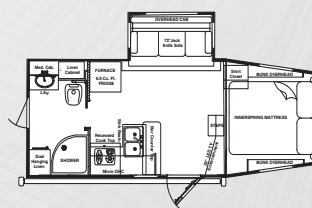
8013.5 RWS



8014 RK-RS



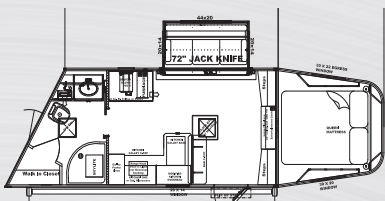
8016 BUNK BEDS



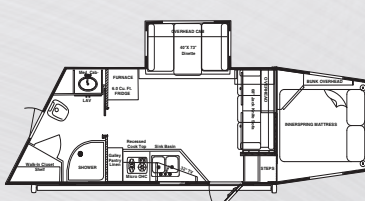
8014 STRAIGHT WALL



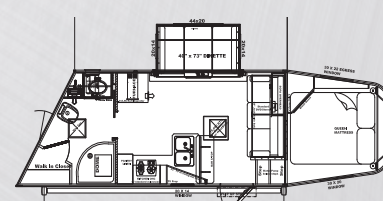
8014 RWS



8016 RK-S DA



8016 RWS ANGLED



8016 RWS BAR

STANDARD SPECIFICATIONS:

REV 4/24/2019

- 8 YEAR STRUCTURAL WARRANTY
- 2 YEAR MERHOW LQ WARRANTY
- 7'6" TALL, 8' WIDE OR 7' WIDE & 40" STALLS
- 4" CROSS MEMBERS COMMONLY ON 16" CENTERS
- EXTRUDED ALUMINUM FLOOR
- ONE PIECE (SEAMLESS) ALUMINUM ROOF
- EXTERIOR ALUMINUM WHITE SKIN .040
- EXTRUDED ALUMINUM SIDES (HORSE AREA ONLY)
- LINED & INSULATED WALLS W/WHITE BEZEL METAL
- (1) LIGHT PER STALL – CURBSIDE
- BALLISTIC WALL LINER
- .100 KICK PLATE
- RUBBER VET MATS IN HORSE AREA
- PADDED AIR FLOW DIVIDERS
- DROP DOWN FEED DOORS – ROADSIDE W/POSITIVE LATCH
- PADDED BUTT AND CHEST STRAPS
- (1) SET OF 8 HEAVY DUTY BRIDLE HOOKS -REAR TACK SIDEWALL
- SINGLE HYDRAULIC JACK
- ESCAPE DOOR STANDARD (3 HORSE OR MORE)
- DDFD IN ESCAPE DOOR (3 HORSE OR MORE)
- PADDLE LATCH IN ESCAPE DOOR (3 HORSE OR MORE) W/BUTTERFLY
- WALK THRU DOOR TO STALL AREA
- TAPERED WHEEL WELLS – 8 WIDE ONLY
- MANGER DOORS W/COLORED SKIN-8"WIDE ONLY-ONE PER STALL EXCEPT ESCAPE DOOR & ONE LIGHT BETWEEN ADJOINING DOORS
- MANGERS – 8 WIDE ONLY W/DRAIN TUBE & PLY-FELT INSIDE LINING
- ALUMINUM BATTERY TRAY
- ELECTRIC BRAKES ALL WHEELS
- STEEL WHEELS W/SPARE & JIFFY JACK
- 10 DEGREE UP DEXTER EZ-LUBE TORSION AXLES
- (2) EXTERIOR & INTERIOR HORSE TIES PER HORSE
- (1) LOAD LIGHT OVER REAR HORSE DOOR
- (1) SADDLE TREE WITH ADJUSTABLE (1) SADDLE BOSS PER HORSE W/BLANKET BAR
- CAMPER DOOR WITH SCREEN-RADIUS ON 8' & SQUARE ON 7'
- FLIP UP CAMPER STEP AT CAMPER DOOR
- FEED BAG RINGS (IN FIRST STALL 8' WIDE)
- (1) TWO-WAY ROOF VENT PER HORSE
- COLLAPSIBLE REAR TACK W/TIE BACK, PLY FELT ON WALL & REAR DOOR, (1) LIGHT,(1) BRUSH BOX ON REAR DOOR
- (2) FULL HEIGHT 60/40 REAR DOORS W/WRAP AROUND HINGES & DOOR HOLDBACKS & SLIDING WINDOW WITH SCREEN & BAR GUARDS IN HORSE DOOR ON CURBSIDE, DRIP RAIL & RUBBER BUMPERS
- 32X24 SLIDING WINDOWS WITH BAR GUARDS ON HIP SIDE – 1 EACH STALL
- 6' OR 12' SLIDE ROOM W/ (2) END WINDOWS & (1) OR (2) PICTURE WINDOWS DEPENDING ON FLOOR PLAN-SLIDE ROOM AWNING TOPPER INCLUDED ON ALL SLIDES – EXCEPT 7' WIDES NO SLIDE ROOM IN SPECIFIC FLOOR PLANS - 7', 9' RWS, 11' RWS,13.5 RWS & 14' RWSD
- EXTERIOR LED LIGHT PACKAGE:(1) PORCH LIGHT (1) GN LIGHT, LIGHTED GRAB HANDLE, (20)CLEARANCE LIGHTS (12 HIGH & 8 LOW), (2) SETS LED TAIL LIGHTS
- SOFT-TOUCH WALLS – EXCEPT SLIDE BOX
- NORCO FLUSH FLOOR SLIDE
- 12V LIGHTING IN SLIDE OUT
- WALL SCONES IN SLIDE OUT & IN BUNK AREA
- 3 WAY SWITCH FOR BUNK CEILING LIGHTS
- DIGITAL CONTROL THERMOSTAT FOR HEATING & COOLING
- SOLID SURFACE COUNTER TOPS – 8' WIDE MODELS
- LAMINATED COUNTER TOPS – 7' WIDE MODELS
- SOFT TOUCH ON ENTRANCE DOOR INTERIOR & (PASS THRU DOOR INTERIOR- 8"WIDE ONLY)
- 30AMP 110V POWER CENTER W/12 V CONVERTOR & SHORE CORD (110V REQUIRED TO RUN AC, MICROWAVE, T V & 110V OUTLETS)
- TV ANTENNA W/BOOSTER
- SATELLITE INLET
- 12V USB PORT – CHARGING ONLY
- STEREO/DVD PLAYER
- (1) 110 EXTERIOR RECEPT
- 7-WAY POWER CORD BARGEMAN'S CORD
- HARDWOOD CABINETS
- RAISED PANEL CABINET DOORS – 8 WIDE HORSE TRAILERS
- EUROPEAN STYLE HIDDEN HINGE CABINET DOORS

- HARDWOOD CROWN MOLDING-MAIN LQ & BUNK ONLY
- FLAT PANEL DOORS – 7' WIDE & STOCK LQ
- HARDWOOD VALANCE W/FABRIC INLAY PACKAGE – 8' WIDE NEXT GEN ONLY
- WRAPPED FABRIC W/WOOD END VALANCES –7' WIDE ONLY
- PLEATED FABRIC SOFT PANEL NIGHT SHADES
- RECESSED COOKTOP WITH GLASS TOP
- MICROWAVE W/BESSEL
- 3.0 CU FT OR 6.0 CU FT REFRIGERATOR W/WOOD FRONT PANEL BASED ON FLOOR PLAN
- KITCHEN FAUCET W/ PULLOUT SPRAYER
- 4" BACKSPASH
- 12V LIGHT UNDER KITCHEN CABINET & IN SEATING AREA
- 12 V FAN W/ WALL SWITCH IN BATHROOM – MANUAL CRANK
- SKYLIGHT IN SHOWER
- 1PC FIBERGLASS SHOWER – SIZE & SHAPE BASED ON FLOOR PLAN
- GLASS SHOWER DOOR
- WATER SAVER SHOWER FAUCET W/PAUSE CONTROL
- RECEPT @BATHROOM VANITY
- ADJUSTABLE SHELVES IN BATH VANITY OVERHEAD
- DELUXE QUEEN INNERSPRING MATTRESS 60X74
- FURNACE, 19,000 BTU
- 13,500 OR 15,000 BTU A/C W/HEAT STRIP (DUCTED) DEPENDING ON FLOOR PLAN
- WATER HEATER 6 GAL GAS DSI (DIRECT SPARK IGNITION)
- SINGLE SEATING STANDARD W/JACK-KNIFE SOFA & DUAL SEATING STD W/SOFA & DINETTE -DEPENDING ON FLOOR PLAN
- LOW POINT DRAIN VALVE
- FRESH WATER TANK - 41 GAL CAP.
- GRAY WATER TANK - 31 GAL CAP.
- BLACK WATER TANK - 31 GAL CAP.
- LINOLEUM FLOOR
- SMOKE/CO/LP DETECTORS
- FIRE EXTINGUISHER
- DUAL 20# LP TANKS W/REGULATOR & CHANGE OVER & TRAY
- OUTSIDE WATER SPIGOT
- SEWER HOSE & HOLDER UNDER GN
- DEEP CYCLE MARINE BATTERY W/ CUTOFF SWITCH
- BATTERY DISCONNECT SWITCH
- WINTERIZATION BI-PASS VALVE & TUBE
- LICENSE PLATE LIGHT
- THIRD PARTY CERTIFICATION

| MODEL | OA LENGTH | AXLE SIZE & TIRES | EST. SHIP WEIGHT | SEATING |
|--------------------|-----------|----------------------------|------------------|-------------------------|
| 8009 RK | 38' 6.5" | 7,000 lb. Axles, 16E TIRES | 9,500 | 72" SOFA |
| 8009 (6CU) | 38' 3.5" | 7,000 lb. Axles, 16E TIRES | 8,700 | 60" SOFA |
| 8009 RWS | 39' 6" | 7,000 lb. Axles, 16E TIRES | 9,500 | 68" SOFA |
| 8010.5 RK-NS | 40' 5" | 7,000 lb. Axles, 16E TIRES | 8,900 | 68" SOFA |
| 8011 RK-RS | 41' 5.25" | 7,000 lb. Axles, 16E TIRES | 11,100 | 72" SOFA |
| 8011 RWS | 41' 3.25" | 7,000 lb. Axles, 16E TIRES | 10,750 | 68" SOFA |
| 8012 BC | 42" .5" | 7,000 lb. Axles, 16E TIRES | 10,900 | 72" SOFA |
| 8013.5 RK-A | 43" .5" | 7,000 lb. Axles, 16E TIRES | 11,500 | 72" SOFA |
| 8013.5 RWS | 43" .5" | 7,000 lb. Axles, 16E TIRES | 11,500 | 40" DINETTE & 68" SOFA |
| 8014 RK-RS | 43' 6.5" | 7,000 lb. Axles, 16E TIRES | 11,500 | 72" SOFA |
| 8014 Straight Wall | 44' 2.5" | 7,000 lb. Axles, 16E TIRES | 11,800 | 72" SOFA |
| 8014 RWS | 43 6.25" | 7,000 lb. Axles, 16E TIRES | 10,500 | 68" SOFA & HALF DINETTE |
| 8016 RK | 45' 2" | 8,000 lb. Axles, 16G TIRES | 12,700 | 72" SOFA |
| 8016 BB | 46' 2.5" | 8,000 lb. Axles, 16G TIRES | 12,600 | 72" SOFA & BUNK BEDS |
| 8016 RWS | 46' 6" | 8,000 lb. Axles, 16G TIRES | 12,200 | 40" DINETTE & 68" SOFA |



Office - 269.483.0010
Fax - 269.483.0030
www.merhow.com

DEALER