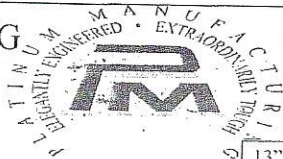


PLATINUM MANUFACTURING

PLATINUMMFG@AOL.COM

STOCK/ COMBO TRAILER ORDER



CUSTOMER: **TRL. UNLIMITED/ MICAH**

REV. 08-09-17 SERIAL NO: **9358 2018 MODEL**

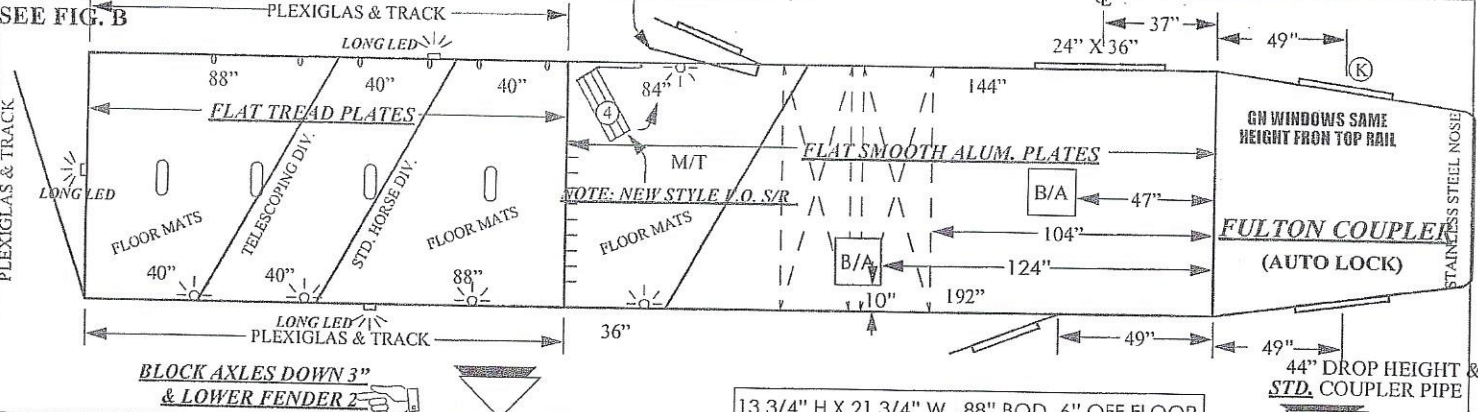
E.C.D. DATE: **08-02-17**

STOCK/ COMBO - DO NOT INSULATE, LINE & RUBBER SIDE WALLS

13" H X 13" W, 96" BOD, 6" OFF FLOOR

REINFORCE REAR END

4 SWING OUT BLANKET BARS



BLOCK AXLES DOWN 3" & LOWER FENDER 2"

13 3/4" H X 21 3/4" W, 88" BOD, 6" OFF FLOOR

MODEL: **3 S/C** WIDTH: **8'-0"** LENGTH: **33'-0"** HEIGHT: **7'-6"**

- 1 2 5/16" Adj. Coupler: **"FULTON"** Jack: **STD.** Drop HGT: **44"**
- 2 Axles Qty: **2-102" (BLOCK 3")**Type: **RUBBER TORSION** Capacity: **8000# (BLOCK 3")** Hub: **8-BOLT**
- 3 **5/8" STUDS** Brakes: **ELECTRIC** Mntg. Brkt.: **75 3/4"** Overhang: **???"**
- 4 Tires: **CUSTOMER SUPPLY** Wheels: **CUSTOMER SUPPLY** Spare: **CUSTOMER SUPPLY**
- 5 GN Sides: **TAPER NOSE TO 6 FT. W/ WINDOW** GN Floor: **SMOOTH ALUM. PLATE**
- 6 Sides: **SLATTED W/ SMOOTH ALUM. AT TOP & 3 A.C.'S @ REAR** Floor: **FLAT TREAD PLATE IN H/C & SMOOTH M/T & LQ**

STANDARD EQUIPMENT

7 BULKHEAD WALL	X	PERMANENT	FLOOR MATS HORSE COMPT.	X	& M/T FLOOR
8 SLATTED FULL WIDTH REAR DOOR	X	W/ SINGLE ANTI-RACK	RUBBER BULKHEAD WALL	X	
9 DRESSING ROOM DOOR	X	STD. W/ WIN., C.S. 49" FROM DROP	RUBBER ON WHEEL WELLS	X	
10 SLATTED SIDE DOOR	NO	DELETED	CARPET	X	ACCESS. ONLY (GRAY)
11 DROP PARTITION	NO	NONE	COVERED SADDLE RACKS, 1 PER	4	FOLD OUT IN M/T
12 CENTER PARTITION	NO	NONE	BRIDLE HOOKS	10	B/H WALL IN M/T
13 STD. HALF DIVIDERS	2	TELESCOPING DIV.	DOME LIGHTS	5	FIVE
14 INSIDE TIE RINGS, 2 PER	6	SIX			
15 OUTSIDE TIE RINGS, 2 PER	6	3 EACH SIDE	D.O.T. TAPE	X	
16 BREAST BAR (FIRST HORSE)	NO	NONE	TAPE COLORS (STOCK/ COMBO)	NO	NONE

- 17 **OPTIONS:** DOUBLE ALUM. BATTERY BOX W/ FOLD DOWN LID (NO WIRING & NO BATTERY) UNDER DROP
- 18 (3) OUTSIDE **LONG LED** LOADING LIGHTS, 1 @ REAR, 1 C.S., 1 S.S.
- 21 PLEXIGLAS & TRACK ON C.S. WALL, S.S. WALL & REAR GATE STAINLESS STEEL ILO ALUM. ON GN NOSE
- 22 (2) BRACES FOR ROOF AIR, SEE ABOVE
- 23 (1) 19" X 34" KICKOUT WINDOWS ILO STD. WINDOW, IN GOOSENECK, S.S. (1) FOLD OUT STEP @ M/T DOOR
- 24 24" X 36" WINDOW W/ SLIDER, S.S., CTR. LINE 37" FROM DROP, 41" OFF FLOOR (1) FOLD OUT STEP @ D/R DOOR
- 26 6 FT. HAYRACK W/ LID, PLATFORM & LADDER ON S.S. (3" AWAY FROM WALL)
- 27 GENERATOR BOX W/ LOUVERS ON ROOF OF TRAILER BEHIND HAYRACK W/ LID, C.S.
- 28 PERMANENT STRAIGHT BULKHEAD WALL, 228" FROM DROP & M/T DOOR S.S.
- 29 (4) SWING OUT BLANKET BARS, @ M/T DOOR
- 30 (4) 2-WAY ROOF VENTS, SEE ABOVE
- 31 PROPANE BOTTLE "BRACKETS" UNDER NECK @ BOTTOM OF DROP, S.S. (14" CENTERS)
- 32 SPACE CROSSMEMBERS FOR TWO 24" WIDE HOLDING TANKS, 118" FROM DROP

Subframe: **104X (BLOCK AXLES DOWN 3")**

Floor: 116X	GN Floor: SEE PRINT	Slide Out Notch Out:
Side C.S.: 11KX	Side S.S.: 11KX	Door Notch Out: C.S. - 216X
Top Rail Length: 39'-9"	Nose: SEE PRINT	B/H Wall: SEE PRINT
Partition(s)/Divider(s):		
Gate(s)/Door(s):	FENDERS S.S. - 1120X FENDERS C.S. - 1120X	

VIN: **5HMVG33X** GVWR: SHIP WT.: DATE: